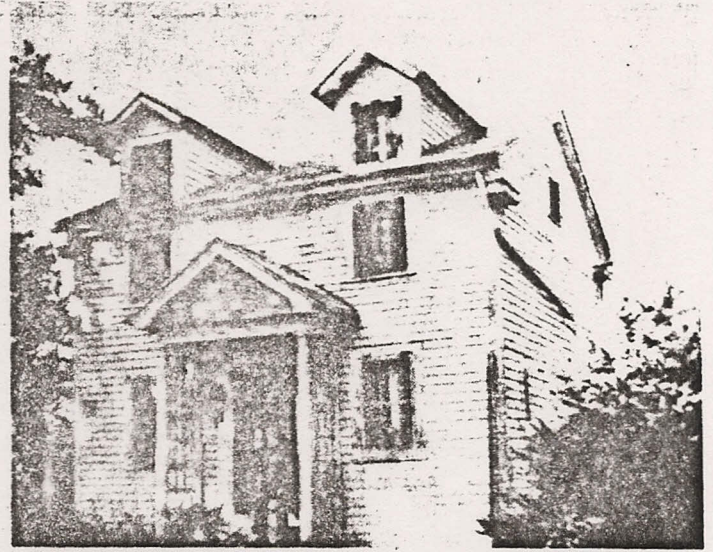


foot waterfall, furnishing water power for a mill—so the name. The rock shelf was blasted out in 1950 when the plant was built and the creek was diverted so the rock bed could be used as the foundation of the administration building.

This Thornton family, the original owner, was a substantial family and Col. Thornton at one time had accumulated about 2,500 acres of land in Clay County alone. He had predicted that he would be worth \$40,000 by the time he was 30 years old and he made it. He and his wife Elizabeth Trigg Thornton had 14 children and raised half of them which was fortunate at that time. They had six daughters and one son. Their daughters married outstanding men who helped Clay County to become important in her formative years. The ruins of the large home built in the 1820s, remain on a hill above the river. Also the foundation of one of the four blockhouses built in the county, is nearby. These were built as protection from the Indians about 1821.

A new shopping center, fast free-ways, trailer parks and World's of Fun with ultra-modern motels close by, would amaze the pioneers who settled this area about 150 years ago!



Discover North Clay County Editor Vera Eldridge (left) and Bill Eldridge examine an old well on the Arnold homestead with William Newby, the home's owner. (Photo by Walton Whitaker)

KAY FURNITURE HAS MOVED

to its NEW STORE!

- More than 15,000 Square Feet
- The Best Selection of Furniture
- Leading Quality Brands at Low Prices

WE HAVE A NEW LOCATION, BUT WE STILL OFFER THE SAME PERSONAL SERVICE, AND THE SAME QUALITY MERCHANDISE AT LOWEST PRICES.

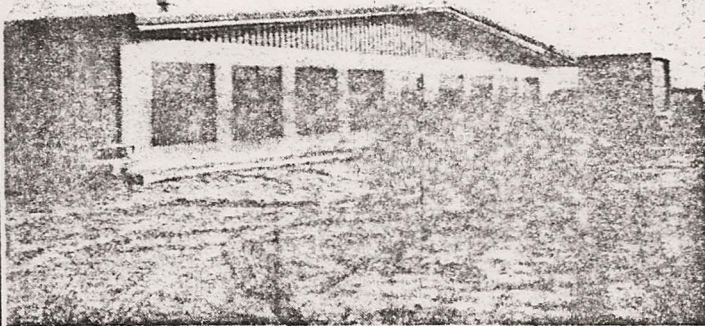
See us NOW at our New Store

**2 BLOCKS SOUTH OF CITIZENS BANK
IN SMITHVILLE ON 169 HWY.
OR CALL US AT 532-0430**

"Where Quality Costs Less"

FURNITURE CO.

169 Highway Smithville, Mo.
Call 532-0430



KAY